

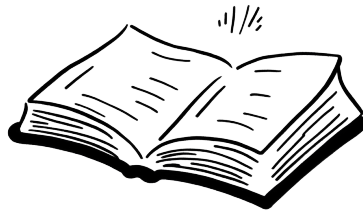
The power of
**Mindful
Mornings**

The First Hour Defines the Next 24.



Table of Contents

Introduction	3
The Power of Presence at Dawn	6
The Sacred Hours of Dawn	6
The Science of Morning Mindfulness	8
Morning Mindfulness Routine	9
The Impact of Morning Presence	11
Building Calm with Mindful Habits	13
The Foundation of Mindful Mornings	13
Mindful Practices for Mental Clarity	15
Fueling Your Body, Focusing Your Mind	18
The Power of Morning Movement	18
Nourishing Body and Mind	20
Integrating Movement and Nourishment	22
Scripting Your Day with Intention	24
The Power of Intentional Planning	25
Crafting Your Personal Planning System	26
Balancing Flexibility and Purpose	27
Overcoming Common Morning Barriers	30
The Psychology of Morning Resistance	30
Creating Systems for Success	32
Mastering Energy and Time	33
A Lifetime of Mindful Beginnings	35
The Natural Evolution of Practice	35
Building Sustainable Growth	37
Creating Lasting Impact	40



Introduction

Take a moment to reflect on your typical morning. Does it begin with a rushed race against the clock, frantically checking messages, or hitting the snooze button repeatedly?

For many, mornings have become a source of stress rather than an opportunity for renewal and focus. Yet, within these early hours lies untapped potential. A chance to transform not just your morning but your entire day ahead.

The quality of your morning directly influences your mental clarity, emotional balance, and overall productivity. When you start your day mindfully, you create a foundation of calm that helps you navigate challenges with greater resilience and purpose.

This isn't about following someone else's rigid routine or waking up at 4 AM to join the "5 AM club." Instead, it's about discovering

and crafting a morning practice that aligns with your natural rhythms and personal goals.

Dedicating time for mindfulness in the morning can help establish a foundation of awareness and intention for the day ahead. This period offers an ideal opportunity to set intentions, cultivate awareness, and prepare both mentally and physically for the day ahead. Through mindful morning practices, you can enhance your focus, reduce stress levels, and approach your daily tasks with renewed energy and clarity.

You might wonder what makes this approach to mornings different from the countless other methods you've encountered. The distinction lies in its emphasis on mindfulness and intentionality rather than rigid schedules or overwhelming lists of must-do activities.

This book guides you through creating a morning routine that feels natural and sustainable, one that you'll actually look forward to rather than resist. You'll learn practical strategies for overcoming common obstacles, such as time constraints or lack of motivation, while discovering how small, consistent changes can lead to remarkable improvements in your daily life.

Whether you're seeking greater productivity, emotional balance, or simply a more peaceful start to your day, the principles and practices shared in these pages will help you establish a morning routine that serves as an anchor for personal growth and daily achievement. The goal is to create a morning practice that

energizes and centers you, setting a positive tone for everything that follows.

Let's explore how you can transform your mornings from a source of stress into a foundation for clarity, focus, and purposeful living. The journey to better mornings—and better days—begins here.



The Power of Presence at Dawn

The morning sun breaks through your window, casting gentle rays across your room. In this quiet moment, before the world fully awakens, lies an extraordinary opportunity: a chance to shape not just your day, but your entire life's trajectory. The power of presence at dawn holds the key to unlocking unprecedented levels of clarity, purpose, and emotional stability through mindfulness practices that can transform your daily experience.

The Sacred Hours of Dawn

The early morning hours possess a unique quality that sets them apart from the rest of your day. Ancient wisdom traditions across cultures have long recognized this period as sacred, ideal for contemplation and self-discovery. Modern science now validates

these age-old insights, **revealing how your brain's chemistry** and neural activity during these early hours create the perfect conditions for mindfulness practices that can enhance your overall well-being and personal growth.

During these precious morning hours, your brain experiences what neuroscientists call the "morning theta state," a period where theta waves dominate neural activity. These waves, associated with deep relaxation and heightened receptivity, make the morning an ideal time for mindfulness practices.

According to research published in the Journal of Neuroscience, morning theta waves facilitate improved learning, memory consolidation, and emotional processing. This natural state of heightened receptivity allows you to absorb and integrate new insights more effectively, making it the perfect time to establish practices that can shape your entire day.

Your body operates on a circadian rhythm, a natural internal clock that regulates various physiological processes. Between 6 AM and 8 AM, cortisol levels naturally peak, preparing you for the day ahead. This hormone surge, known as the "cortisol awakening response," increases alertness and energy.

When you align your mindfulness practices with this natural rhythm, you harness your body's inherent biological advantages. Studies have shown that individuals who practice mindfulness during these peak cortisol hours experience enhanced focus and reduced stress levels throughout the day. According to research by Goyal et al., morning meditation practitioners reported a 28%

reduction in stress-related symptoms compared to those who practiced at other times.

The Science of Morning Mindfulness

Understanding true mindfulness goes beyond simply sitting quietly or attempting to empty your mind. It's about cultivating a state of present-moment awareness with acceptance and non-judgment.

This practice involves training your attention to focus on the here and now, rather than getting lost in thoughts about the past or future. The effectiveness of morning mindfulness practices isn't just anecdotal; it's backed by robust scientific research that demonstrates significant changes in brain structure and function.

Neuroimaging studies have revealed that regular morning mindfulness practices can actually change the structure and function of your brain. These changes occur primarily in regions associated with attention, emotional regulation, and self-awareness.

A study in *Psychiatry Research* has shown that practicing mindfulness can increase gray matter density in the hippocampus, enhancing your learning and memory capabilities. Additionally, it reduces activity in the amygdala, lowering stress and anxiety levels, while strengthening connections in the prefrontal cortex, improving your decision-making abilities.

The relationship between your mental state and physical well-being becomes particularly pronounced in the morning

hours. When you practice mindfulness upon waking, you create a positive cascade effect that influences both psychological and physiological functioning throughout the day.

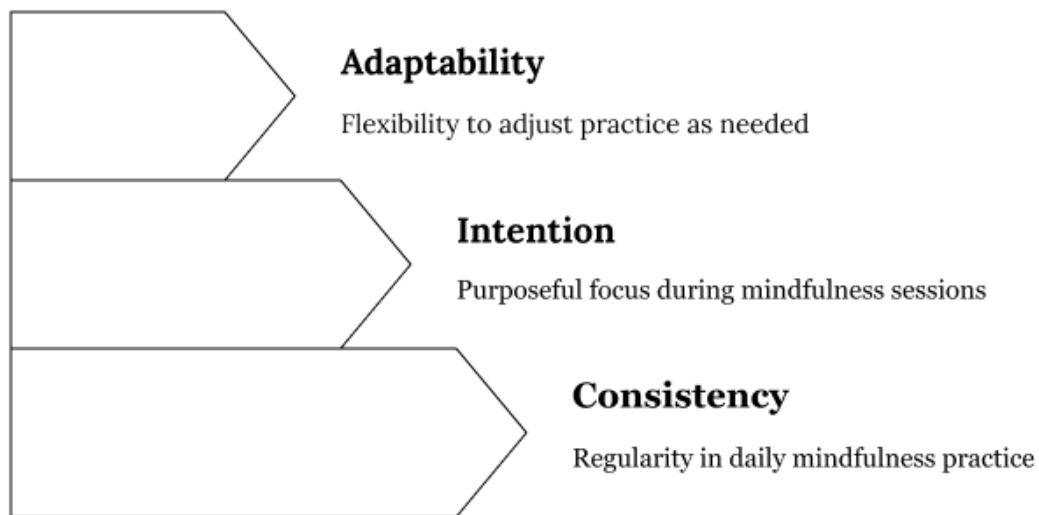
Morning mindfulness practices help regulate key hormones that affect your mood and energy levels. Besides cortisol, these practices influence serotonin (the "happiness hormone" that regulates mood and social behavior), dopamine (the "reward" neurotransmitter that drives motivation), and melatonin (the sleep hormone that helps maintain your circadian rhythm).

Morning Mindfulness Routine

One of the most significant benefits of morning mindfulness is its ability to create mental space before the day's notifications and demands begin to flood in. Instead of immediately checking your phone and filling your mind with information, morning mindfulness practices provide a buffer zone—a sacred space where you can center yourself before engaging with the day's demands. This intentional pause allows you to process lingering thoughts and emotions, set clear intentions, build emotional resilience, and cultivate a sense of gratitude and perspective.

Creating a sustainable morning mindfulness practice requires understanding and implementing certain fundamental principles. The **three pillars of morning mindfulness**—consistency, intention, and adaptability—form the foundation of an effective practice. Understanding how these elements work together allows you to build a practice that's both meaningful and sustainable over time.

Consistency means practicing at the same time each morning to establish a reliable routine. Intention involves setting clear purposes for your practice to enhance its effectiveness. Adaptability allows you to be flexible with your practice while maintaining its essence.



Your physical environment plays a crucial role in supporting your morning mindfulness practice. Creating a dedicated space can significantly enhance its effectiveness. Consider factors such as natural light exposure, air quality and ventilation, ambient sounds or silence, temperature comfort, and physical comfort through appropriate seating or cushions.

While you don't need an elaborate setup, having a designated area helps signal to your brain that it's time for mindfulness. This space should be clean and uncluttered, free from digital distractions, comfortable but not too comfortable, well-ventilated, and peaceful.

The breath serves as your constant companion and anchor to the present moment during morning mindfulness practice. Different breathing patterns are known to activate different neural networks in your brain. Slow, deliberate breathing typically associated with mindfulness practices has been shown to activate the parasympathetic nervous system, reduce stress hormone levels, improve cognitive function, enhance emotional regulation, and increase focus and attention span.

The Impact of Morning Presence

The benefits of morning mindfulness extend far beyond the practice itself. Like dropping a stone in a still pond, the effects ripple outward, influencing every aspect of your day. Individuals who maintain consistent morning mindfulness practices are more likely to experience improved relationships due to enhanced emotional awareness, better decision-making capabilities, increased creativity and problem-solving abilities, greater resilience in facing challenges, and enhanced overall life satisfaction.

In the professional sphere, morning mindfulness practices can be particularly transformative. Employees who engage in morning mindfulness typically experience higher productivity levels, better team collaboration, reduced workplace stress, improved leadership capabilities, and enhanced creative problem-solving skills. These benefits create a positive cycle of growth and improvement that can transform both your personal and professional life.

As your morning mindfulness practice develops, you'll notice its effects permeating other areas of your life. This ripple effect creates positive changes in relationship quality, work performance, health behaviors, decision-making, and overall life satisfaction. Each morning offers a fresh opportunity to deepen your practice and enhance your life, creating a foundation for greater clarity, purpose, and well-being.

The power of presence at dawn through mindfulness practices offers you a transformative approach to starting your day. When you understand and implement these principles, you create a foundation for greater clarity, purpose, and well-being in every aspect of your life, bringing a new opportunity to cultivate presence and transform your daily experience.



Building Calm with Mindful Habits

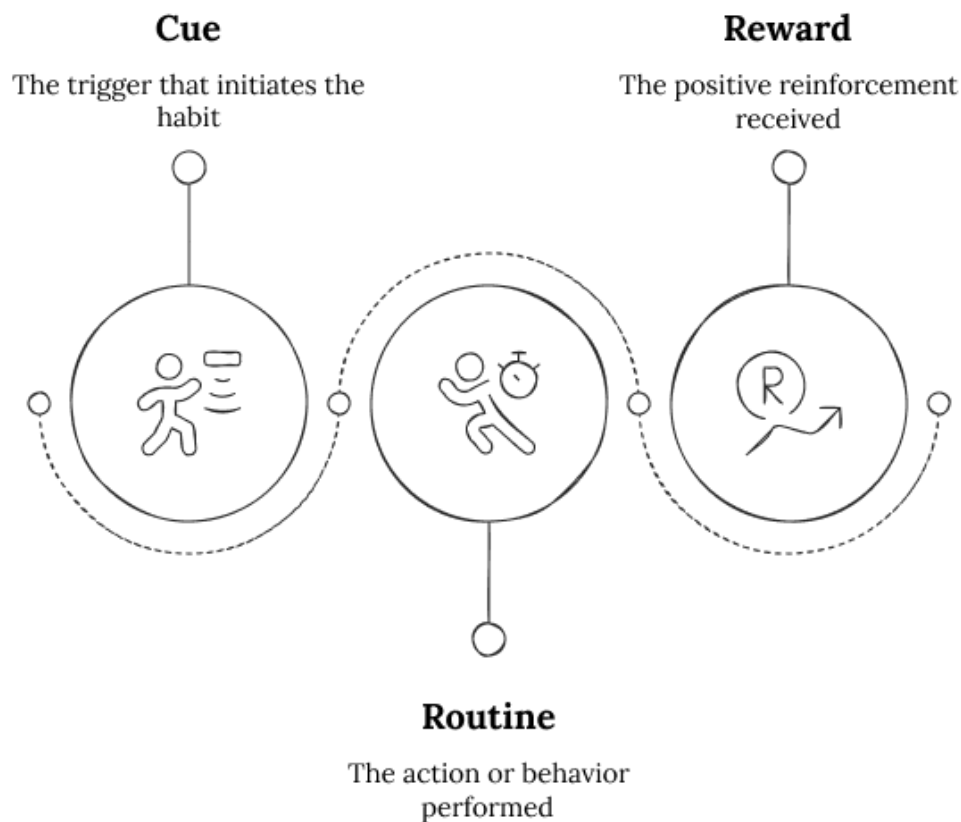
Every morning presents a blank canvas, waiting for you to paint it with purposeful actions that will shape your day. As your consciousness emerges from sleep, you have a unique opportunity to establish practices that will ground you in presence and purpose. While the previous chapter explored the science behind morning mindfulness, now we'll examine the specific practices and rituals that can transform your mornings from rushed and reactive to intentionally peaceful.

The Foundation of Mindful Mornings

Building mindful morning habits requires more than just willpower—it demands a deep understanding of how your brain

forms and maintains new behaviors.

Neuroscience reveals that habit formation occurs through what researchers call the "**habit loop**," a three-part cycle consisting of a cue, routine, and reward. When you apply this understanding to crafting mindful morning habits, you create sustainable practices that naturally integrate into your daily life rather than feeling like another item on your to-do list.



Try journaling in the morning. The cue might be the sight of your journal placed strategically by your favorite chair, accompanied by a steaming cup of tea. The routine becomes the act of writing itself, allowing your thoughts to flow freely onto the page.

The reward of this practice manifests as the clarity and emotional release that follows, creating a sense of mental spaciousness that carries you into your day. Research published in the *Journal of Behavioral Science* shows that individuals who consciously design their habit loops around mindful practices are 64% more likely to maintain these habits long-term compared to those who rely solely on motivation.

Your physical environment plays a crucial role in supporting the formation of mindful habits. Environmental triggers can act as reliable cues that initiate desired behaviors. These environmental cues bypass the need for conscious decision-making, making it easier to maintain your routine even on challenging mornings.

The science of habit formation teaches us that small, consistent actions compound over time to create significant change. According to research published in the *European Journal of Social Psychology*, while the average time to form a new habit is 66 days, the range can vary from 18 to 254 days depending on the complexity of the behavior and individual differences. This understanding helps you approach your morning practice with patience and self-compassion, recognizing that sustainable change happens gradually rather than overnight.

Mindful Practices for Mental Clarity

Among the most transformative morning practices, journaling stands as a cornerstone for developing mental clarity and emotional awareness. This practice serves as a bridge between

your subconscious mind, which has been active during sleep, and your conscious awareness. The act of writing by hand activates neural pathways that enhance memory, creativity, and emotional processing, making it an ideal way to begin your day.

Morning journaling can take various forms, each offering unique benefits for mental clarity and emotional well-being.

Stream-of-consciousness writing, popularized by Julia Cameron as "morning pages," involves writing three pages of unfiltered thoughts immediately upon waking. This technique helps clear mental clutter and access deeper insights that might otherwise remain buried beneath daily concerns.

When it comes to meditation, different techniques offer various benefits for morning practice. **Focused attention meditation**, where you concentrate on a single point like your breath or a mantra, helps develop concentration and mental clarity.

The practice of **body scan meditation** offers another powerful morning tool. This technique involves systematically directing your attention through different parts of your body, promoting physical awareness, and releasing tension. Body scan meditation may help activate the insula, a brain region responsible for interoceptive awareness (the ability to sense your body's internal state). Regular practice can improve your posture, reduce physical tension, and enhance your overall body awareness throughout the day.

Breathing exercises form the foundation of any mindful morning routine. The **4-7-8 breathing technique**, developed by Dr. Andrew Weil, can help activate the parasympathetic nervous system and

reduce morning cortisol levels. This involves inhaling for four counts, holding the breath for seven counts, and exhaling for eight counts.

During your morning practice, sound and silence both play vital roles in enhancing mindfulness. Complete silence, especially in the early morning hours, provides a rare opportunity for deep listening and presence. When incorporating sound into your routine, choose elements that support rather than distract from your practice. Certain types of instrumental music can enhance alpha brain waves, promoting a state of relaxed alertness ideal for morning practices.

Your relationship with technology during morning practices requires careful consideration. While digital tools can support mindfulness through meditation apps or guided exercises, they can also become sources of distraction and anxiety.

Implementing a "**digital sunrise**" approach, where you gradually introduce technology after completing your core morning practices, helps protect the sanctity of your routine. This is why we are often advised by experts to delay checking our phones for the first hour after waking to lower our stress levels and increase our productivity throughout the day.

Crafting mindful morning habits requires patience, commitment, and understanding of how habits form and take root in your daily life. Through consistent practice and gentle persistence, these morning rituals become not just habits but anchors that ground you in presence and purpose throughout your day.



Fueling Your Body, Focusing Your Mind

Your body emerges from sleep into the soft light of dawn, every cell ready to write the story of a new day. This pivotal moment holds immense potential: a fresh canvas where mindful movement and intentional nourishment can merge to create an unshakable foundation for clarity and purpose. The practices you choose in these early hours ripple through your entire day, influencing everything from cognitive function to emotional resilience.

The Power of Morning Movement

When you engage in mindful movement as sunlight first touches the horizon, you're not simply going through physical

motions—you're actively rewiring your brain for enhanced performance.

This fascinating process, known as **activity-dependent neuroplasticity**, occurs when physical movement triggers the release of brain-derived neurotrophic factor (BDNF), a protein that promotes the growth and maintenance of neural connections. Research by Tang et al. (2015) reveals that morning movement practices capitalize on your brain's natural state of heightened neuroplasticity upon waking, creating an optimal environment for forming new neural pathways.

During sleep, your brain undergoes synaptic pruning, clearing away unnecessary neural connections. This creates a unique opportunity each morning to establish new pathways through mindful movement, which can help improve cognitive flexibility. This enhanced mental agility translates directly into better problem-solving abilities and creative thinking throughout your day.

The connection between body awareness and emotional regulation becomes particularly pronounced during morning movement. As you flow through each conscious movement, you create a powerful feedback loop between physical sensations and emotional states. This heightened interoceptive awareness serves as a cornerstone for emotional regulation. When you can accurately interpret and respond to your body's signals, you're better equipped to navigate the emotional challenges that arise throughout your day.

Yoga stands out as an exceptionally effective morning practice,

combining physical postures (asanas), breath control (pranayama), and meditation into a comprehensive approach to morning activation. The practice helps balance your autonomic nervous system, reducing stress hormones while increasing feel-good neurotransmitters like serotonin and dopamine. When you practice yoga in the morning, you're not just stretching muscles; you're creating a state of physical and mental harmony that can sustain you through your most demanding days.

Dynamic stretching offers another powerful tool for morning activation, especially valuable for those with limited time. Unlike static stretching, dynamic movements incorporate continuous patterns that enhance blood flow and neural activation. Even a brief 10-minute session of dynamic stretching can significantly impact your physical and mental readiness for the day. The key lies in maintaining mindful awareness throughout each movement, treating every stretch as an opportunity to deepen your mind-body connection.

The integration of conscious breathing with movement creates **respiratory-locomotor coupling**, a synchronization between breath and movement that enhances both physical performance and mental clarity via cortisol reduction. Lower levels of stress hormones create an optimal state for focused work and creative thinking, setting the stage for peak performance in your professional and personal endeavors.

Nourishing Body and Mind

The way you fuel your body in the morning creates a foundation for cognitive function and energy levels throughout your day. The morning hours represent a crucial window for nutrient intake as your body emerges from the overnight fasting period.

Understanding the science behind morning nutrition allows you to make intentional choices that support both physical vitality and mental clarity.

The neurochemistry of morning hydration plays a vital role in cognitive function. After hours without water during sleep, your brain operates at a slight deficit that can negatively impact cognitive performance.

When you prioritize hydration upon waking, you're not just quenching thirst; you're also optimizing neural transmission, enhancing mental clarity, and supporting your body's natural detoxification processes. Starting your day with warm lemon water, for instance, provides gentle support for digestion while creating a moment of mindful transition from sleep to wakefulness.

Your body's circadian rhythms significantly influence how efficiently you process and utilize different nutrients throughout the day. The first 30–60 minutes after waking represent a unique opportunity to provide your brain with optimal fuel for performance. During this window, your body is particularly receptive to nutrients that support cognitive function, such as

proteins that provide essential amino acids for neurotransmitter production.

Creating a mindful eating practice in the morning involves more than selecting nutritious foods—it requires full engagement with the experience of nourishment. When you eat with presence and attention, you improve digestion and nutrient absorption while cultivating a state of mindfulness that can extend throughout your day. This might involve taking a few deep breaths before eating, expressing gratitude for your food, or simply noting the colors, textures, and flavors of each bite.

Integrating Movement and Nourishment

The true power of morning practices emerges when you understand how to combine movement and nourishment effectively. Rather than treating these as separate activities, consider them complementary elements of a unified morning practice. The sequence and timing of these practices can significantly impact their effectiveness, creating a compound effect where the benefits of each practice enhance the others.

Understanding your personal energy patterns plays a crucial role in designing an effective morning routine. Some individuals thrive with vigorous morning movement followed by a substantial breakfast, while others prefer gentle stretching and lighter fare.

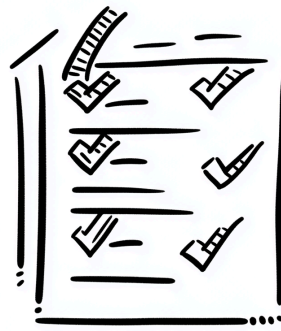
The answer lies in experimenting mindfully to discover what combination best supports your unique needs and goals. Consider

keeping a morning practice journal to track how different combinations of movement and nourishment affect your energy, focus, and mood throughout the day.

Creating a sustainable morning routine requires thoughtful planning and preparation. Setting up your environment the night before (preparing workout clothes, setting out breakfast ingredients, or filling a water bottle) removes friction points that might otherwise derail your morning routine. The concept of **habit stacking** proves particularly useful when combining movement and nourishment practices. By linking new habits to existing ones, you create a natural flow that makes your morning routine feel more automatic and less demanding of willpower.

Your morning routine should evolve with the changing seasons and adapt to your life circumstances. During darker winter months, you might emphasize indoor movement practices and warming foods, while summer might call for earlier wake times to take advantage of cooler temperatures for outdoor movement. This flexibility ensures your practice remains sustainable and enjoyable throughout the year.

The integration of mindful movement and nourishment creates a powerful foundation for daily clarity and purpose. By understanding the science behind these practices and approaching them with intention and awareness, you can create a morning routine that not only energizes your body but also cultivates lasting mental clarity and emotional balance.



Scripting Your Day with Intention

The gentle morning light bathes your desk in a soft glow as you grasp your pen, poised to craft the story of your day ahead. This sacred moment holds transformative potential: the power to shape not just the coming hours, but the entire direction of your life's journey.

When you approach your mornings with deliberate intention rather than reactive urgency, you create a foundation for lasting clarity, unwavering focus, and meaningful achievement that resonates through every aspect of your day. By consistently aligning your daily actions with your broader aspirations, you turn ordinary moments into stepping stones toward the life you truly desire.

The Power of Intentional Planning

The profound impact of morning planning extends far beyond basic organization. It fundamentally rewires your brain for enhanced performance and purposeful living. Starting your day with a clear sense of purpose creates a momentum that carries through every decision and task ahead.

Engaging in structured morning planning has been shown to reduce mental fatigue and improve goal achievement. When you take a few moments to outline priorities and set clear intentions, you free up mental energy that would otherwise be spent making decisions on the fly. This proactive approach helps prevent the overwhelm that often accompanies a reactive mindset, leading to greater focus and sustained motivation throughout the day.

Your brain's executive function—the neural command center responsible for planning, decision-making, and self-regulation—operates at peak capacity during the morning hours. This makes it an ideal time for strategic thinking, intention-setting, and aligning daily actions with long-term goals. Individuals who establish a morning routine that includes structured planning often find that their decisions are more thoughtful, their productivity improves, and their ability to manage stress increases.

The transformation of your morning planning routine begins with understanding the crucial distinction between setting intentions and simply listing tasks. While traditional to-do lists focus on

external actions, setting daily intentions encourages a deeper connection to the mindset and energy you bring to your day.

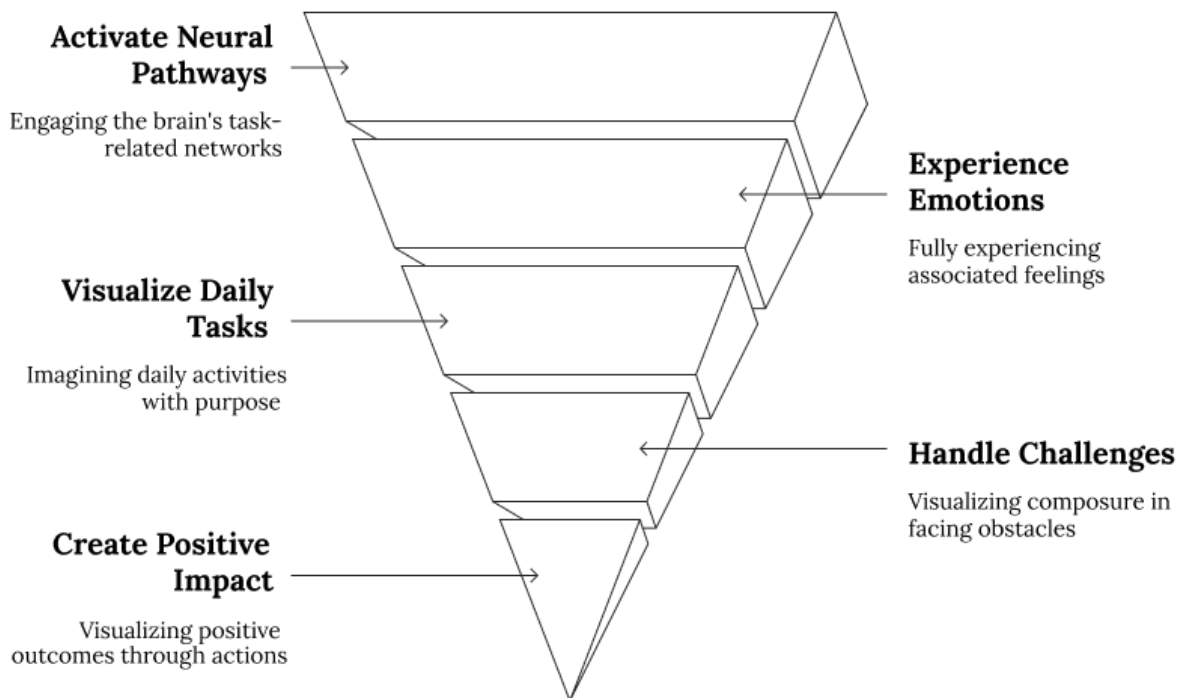
Those who shift from merely listing tasks to framing their day with meaningful intentions often experience a greater sense of purpose, increased job satisfaction, and a healthier work-life balance. By adopting this approach, morning planning becomes more than just an organizational tool. It becomes a catalyst for clarity, effectiveness, and long-term success.

Crafting Your Personal Planning System

The art of effective morning planning requires a delicate balance between structure and flexibility. Your planning system should serve as a compass rather than a cage, guiding your actions while allowing space for unexpected opportunities and challenges. This is why **intentional architecture**, a systematic approach to organizing your day that aligns with your natural energy patterns and core values, is crucial.

Start by implementing the **triple focus framework**, an approach that combines three essential elements of effective planning. First, begin with values alignment. Review your core principles and long-term goals, ensuring your daily plans serve these broader priorities. Next, focus on energy management by mapping your tasks and commitments according to your natural performance patterns. Finally, integrate strategic buffers into your schedule, maintaining flexibility while preserving your core intentions.

The power of visualization serves as a crucial complement to traditional planning methods. When you engage in **embodied visualization** (i.e., not just seeing your intended outcomes but fully experiencing the emotions and sensations associated with them), you activate the same neural pathways involved in actual task performance. Take time each morning to vividly imagine yourself moving through your day with purpose, handling challenges with composure, and creating a positive impact through your actions.



Research published in *Frontiers in Psychology* shows that the physical act of writing by hand activates unique neural pathways that enhance memory and learning. This, by extension, can help

people commit to their intentions, since writing by hand improves retention and recall.

Balancing Flexibility and Purpose

One of the greatest challenges in daily planning lies in maintaining clarity and purpose when circumstances inevitably shift. The solution is to develop **flexible persistence**, or the ability to hold firm to your core intentions while adapting your specific approaches as needed. Individuals who practice flexible planning typically experience less stress when facing unexpected changes compared to those with rigid plans.

The practice of intentional time blocking transforms your calendar from a constraint into a powerful tool for maintaining focus and clarity. Those who implement purposeful time blocking are more likely to experience an increase in focused work time and a reduction in task-switching costs. Create **intention-aligned blocks**—chunks of time specifically designed to support your morning intentions while maintaining flexibility for unexpected demands.

Consider the implementation of regular check-ins throughout your day to assess the alignment between your actions and intentions. These brief moments of reflection serve as calibration points, allowing you to make necessary adjustments while staying true to your core purpose.

Your evening reflection serves as a powerful bookend to your morning planning, creating a cycle of continuous improvement. Take time to evaluate not just what you accomplished, but how well your actions aligned with your intended purpose and values. Use this time to identify patterns in successful implementation, note opportunities for enhanced clarity, and celebrate moments of purposeful achievement.

The integration of digital tools with your planning practice should enhance rather than replace your core intention-setting routine. Practice **intentional tech integration**, or using digital tools to support rather than dominate your planning process. This balanced approach can lead to an increase in follow-through on intentions compared to either purely analog or purely digital systems.

Through consistent practice and gentle refinement of your morning planning routine, you create not just a schedule but a framework for maintaining clarity, purpose, and meaningful achievement throughout your day. Each sunrise brings a fresh opportunity to align your actions with your deepest values and intentions, creating ripples of positive impact that extend far beyond the immediate hours ahead.

As you continue developing your morning planning practice, you'll discover increasingly subtle ways to maintain clarity and purpose amid life's inevitable challenges and changes. The key lies not in controlling every moment but in approaching each day with clear intention and adaptable focus.



Overcoming Common Morning Barriers

As the first rays of sunlight pierce through your window, the gap between your morning aspirations and reality becomes starkly apparent. While your mind yearns for those peaceful moments of mindful practice, various obstacles stand ready to derail your intentions. Yet understanding and overcoming these barriers isn't just about willpower, but about developing a deep awareness of the psychological, environmental, and practical challenges that can impact your morning routine.

The Psychology of Morning Resistance

Morning resistance runs deeper than simple laziness or lack of motivation. Your brain's natural tendency to conserve energy

creates **psychological inertia**, a powerful force that resists changes to established patterns. This resistance manifests in various ways, from hitting the snooze button to finding endless reasons why "tomorrow would be better" to start your new routine. This tendency isn't due to lack of desire, but because of complex psychological and environmental factors that create resistance.

The phenomenon of **decision fatigue** plays a crucial role in morning resistance. Every choice you make depletes your mental energy. When you wake up, your brain immediately faces a barrage of choices: what to wear, what to eat, how to structure your morning, when to leave for work. The constant stream of decisions can tax your willpower from the moment you open your eyes.

This cognitive load feels particularly heavy when you're attempting to establish new routines or break old patterns. The weight of these decisions can overwhelm your mental resources before you've even started your day, making it easier to fall back into familiar patterns rather than maintain new practices.

Your brain's natural sleep-wake transition process, known as **sleep inertia**, creates another layer of morning resistance. This groggy state typically lasts 15–30 minutes but can extend up to two hours if sleep quality is poor.

During this period, cognitive performance can be greatly reduced, making it particularly challenging to engage in mindful practices or make beneficial choices. Understanding this biological reality helps

you design morning routines that work with your body's natural rhythms rather than against them.

The impact of timing on willpower presents another fascinating aspect of morning resistance. Willpower operates like a muscle—it can be strengthened through consistent practice but also becomes fatigued with use.

The morning hours offer a unique window when willpower reserves are naturally higher, yet this advantage can be quickly depleted if you face too many decisions or challenges at once. By understanding this dynamic, you can structure your morning routine to preserve and maximize your natural willpower reserves.

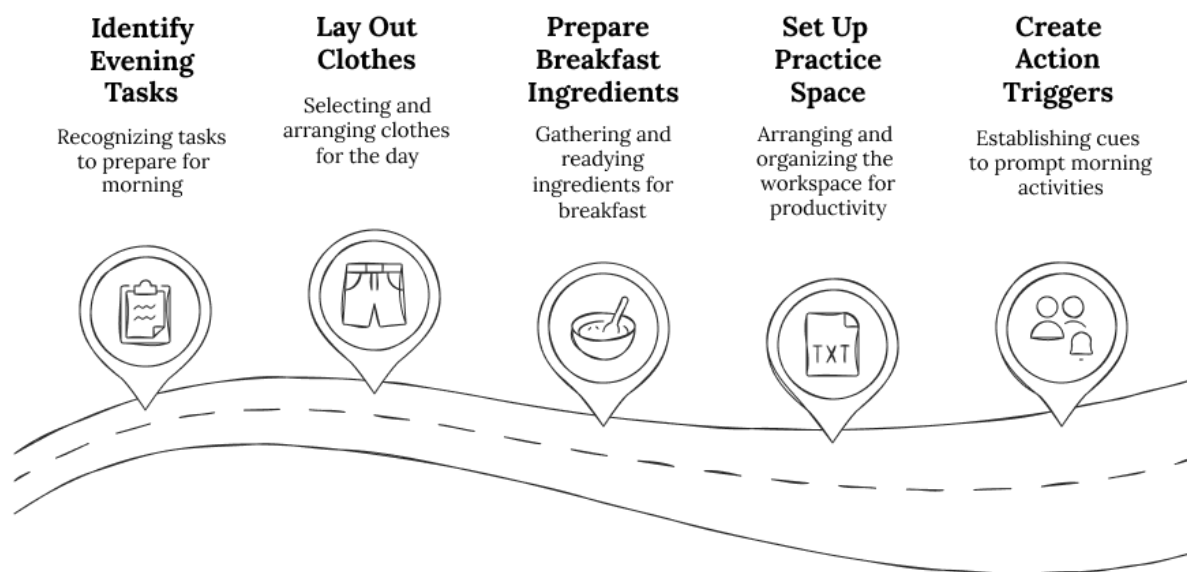
Creating Systems for Success

The key to overcoming morning barriers lies not in relying solely on motivation or willpower, but in creating robust systems that support your desired behaviors. These systems should address both the psychological and practical aspects of morning resistance while providing flexibility to adapt to changing circumstances. The **morning success system** framework offers a comprehensive approach to building sustainable morning practices.

Your physical environment plays a crucial role in supporting or hindering your morning routine. Creating **environmental congruence**, or the alignment between your physical space and intended behaviors, significantly increases the likelihood of morning routine success. This goes beyond simple organization to

include elements like temperature control, lighting design, and sound management.

The integration of preparation rituals can transform your morning experience by reducing decision fatigue and creating natural momentum. By implementing the **evening preparation protocol**, you effectively remove common morning barriers before they arise. This includes laying out clothes, preparing breakfast ingredients, setting up your practice space, and creating clear action triggers for your morning routine.



Social support and accountability play vital roles in overcoming morning barriers. Individuals who establish **routine partnerships** (relationships specifically focused on supporting morning practices) are more likely to maintain their routines long-term. These partnerships can take various forms, from workout buddies to meditation groups to online accountability communities. It's

crucial to create connections that provide both support and gentle accountability without inducing pressure or judgment for routine partnerships to work.

Mastering Energy and Time

One of the most significant barriers to morning practices involves managing energy levels and time constraints. The perception of time scarcity often creates a self-fulfilling prophecy where rushing and stress become default morning states. However, your perception of time can significantly influence how you experience and use it. By implementing **temporal reframing**, you can transform your relationship with morning time.

The integration of energy management principles with time management creates a powerful framework for sustainable morning practices. Understanding your natural energy patterns, known as your **chronotype**, allows you to align your morning activities with your body's natural rhythms.

The concept of **energy sequencing** provides another valuable tool for overcoming morning barriers. By arranging your morning activities in alignment with your natural energy fluctuations, you create a flow that feels effortless rather than forced. This might mean starting with gentle movement before progressing to more demanding practices, or beginning with meditation before engaging in creative work.

The challenge of maintaining morning prying circumstances requires developing **routine resilience**. This involves creating multiple versions of your morning routine (i.e., full, medium, and minimal practices) that can be implemented depending on available time and energy.

Understanding and implementing these principles while maintaining compassion for yourself along the journey can transform morning barriers from insurmountable obstacles into opportunities for growth and deeper self-awareness. Remember that consistency matters more than perfection, and each sunrise brings a fresh chance to refine your approach to beginning your day with purpose and presence.



A Lifetime of Mindful Beginnings

As sunlight spills across your meditation cushion each morning, you glimpse the endless potential that lies within your practice. Your journey of crafting mindful mornings represents more than a simple sequence of habits; it reveals an evolving path of growth that deepens with each sunrise. Like a master gardener tending to precious seedlings, you've learned to nurture the essential elements of presence and purpose. Now it's time to understand how these practices mature and flourish throughout a lifetime of conscious cultivation.

The Natural Evolution of Practice

Your morning routine breathes and grows like a living organism, requiring both consistency and adaptability to thrive. Individuals

who maintain long-term practices don't simply repeat rigid sequences—they develop **dynamic consistency**. This approach preserves core elements while allowing natural variation, leading to a much higher likelihood of maintaining morning practices over years or decades compared to those following inflexible routines.

This evolution mirrors the neuroplasticity principles explored in Chapter 3, where morning movement builds new neural pathways. Similarly, your maturing practice creates deeper mental grooves while sprouting fresh connections. As your routine develops both roots and branches, you experience **sustainable transformation**, or change that becomes more stable and effective over time rather than requiring constant reinforcement.

Consider how this manifests in meditation practice. You might begin with guided five-minute sessions focused on breath awareness, similar to the foundational techniques described in Chapter 2. As your practice matures, you naturally develop the capacity for longer periods of concentration and more nuanced awareness. However, this evolution doesn't invalidate simpler techniques as they remain valuable tools in an expanding repertoire, much like the habit loops that initially helped establish your routine.

The concept of **practice maturation** reveals how routines naturally evolve through distinct phases. In the early stages, you focus on establishing basic consistency, much like the morning barriers overcome in Chapter 5. As your practice deepens, you develop **adaptive expertise**, or the ability to modify your approach based on changing conditions while maintaining core principles. This

flexibility allows your routine to bend without breaking, growing stronger through adaptation rather than rigidity.

Your practice evolution creates ripples that extend far beyond the morning hours, influencing every aspect of your life through what experts call **practice cascading**. This phenomenon builds on the ripple effect described in Chapter 1, where morning mindfulness naturally flows into your work, relationships, and decision-making. Individuals who maintain consistent morning practices often experience a significant improvement in work-life balance and a dramatic increase in relationship satisfaction.

Building Sustainable Growth

Creating lasting transformation requires more than just maintaining habits; it demands conscious integration of your practices into the fabric of daily life. This process of **lifestyle embodiment** transforms morning mindfulness from isolated rituals into fundamental aspects of who you are. Those achieving this level of integration typically experience a higher level of life satisfaction and an increase in perceived purpose.

The key to sustainable growth lies in **value alignment**, in which you ensure your morning practices consistently reflect and reinforce your core principles. This creates a powerful feedback loop where habits strengthen values and values fuel habits, building on the intentional planning principles explored in Chapter 4. When your routines align with deeper purpose, motivation flows naturally rather than requiring constant willpower.

Your growth accelerates through **practice amplification**, or the strategic combination of different morning elements to create enhanced effects. For example, performing brief meditation before journaling increases insight generation compared to either practice alone. This builds on the integrated movement and nourishment principles discussed in Chapter 3, where coordinated practices compound their benefits.

The concept of **strategic sequencing** provides another powerful tool for advanced practice. This involves arranging morning activities to create natural momentum and enhanced benefits. Proper sequencing can greatly increase the overall effectiveness of morning practices. Consider how your energy flows naturally from gentle movement to meditation to creative work, creating an **enhancement cycle**:

1. Regular Assessment

Monthly review of practice effectiveness and alignment

2. Targeted Experimentation

Testing new elements or modifications based on insights

3. Integration

Incorporating successful changes while maintaining core principles

4. Refinement

Fine-tuning based on experience and emerging needs

Measuring Deep Progress

Traditional metrics often fail to capture the subtle yet significant changes that occur through consistent practice. This requires developing **holistic measurement**, comprised of approaches that consider both quantitative and qualitative aspects of growth. The following Progress Matrix helps track your evolution across key dimensions:

Dimension	Early Stage	Intermediate	Advanced
Consistency	Following basic routine	Adapting to circumstances	Natural integration
Depth	Surface-level practice	Growing awareness	Deep understanding
Impact	Immediate effects	Lasting changes	Life transformation
Integration	Separate from daily life	Partial integration	Full embodiment

Maintaining motivation over the years requires different approaches than establishing initial habits. Individuals who develop **intrinsic sustainability**, or motivation driven by internal values rather than external pressure, are more likely to maintain long-term practices. This connects to the psychological principles explored in Chapter 5, where understanding deeper motivations helps overcome morning barriers.

The practice of **progress cycling** offers a sustainable framework for growth, alternating periods of intense focus with consolidation and integration. This approach can help reduce burnout risk while maintaining consistent progress. Like the flexible persistence discussed in Chapter 4, this rhythm allows you to honor both your drive for growth and need for rest.

Creating Lasting Impact

Your morning practice creates **transformative ripples**—positive changes extending far beyond individual benefits. These ripples can extend to many areas in your life. Far-reaching benefits include:

- Increase in overall life satisfaction
- Improvement in relationship quality
- Enhanced career satisfaction
- Better health outcomes
- Greater financial stability

These benefits often extend to family members, colleagues, and communities, creating **positive impact networks**, or environments where mindful living becomes more natural and accessible for everyone involved. This multiplication of benefits reflects the ripple effect described in Chapter 1, where individual transformation catalyzes collective growth.

Sharing your practice experiences with others creates another powerful feedback loop. Those who regularly share their journey

tend to experience an increase in their own consistency and depth of practice. This creates **collective practice enhancement**, or mutual growth through shared learning and support.

As your practice matures, it must adapt to life's natural seasons while maintaining its essential benefits. This requires developing **practice resilience**, which is the ability to modify your routine while preserving core elements. Try creating different versions of your practice for varying circumstances, establishing minimum viable routines for challenging periods, and maintaining connection with essential principles during transitions.

Remember that each sunrise brings fresh opportunities to refine your approach, deepen your understanding, and expand your positive impact. Your morning practice represents both a daily ritual and a lifetime journey, an ongoing exploration of what's possible when you begin each day with presence and purpose. May your mornings continue to be sources of clarity, growth, and transformative change, creating ripples of positive impact that extend far beyond yourself.